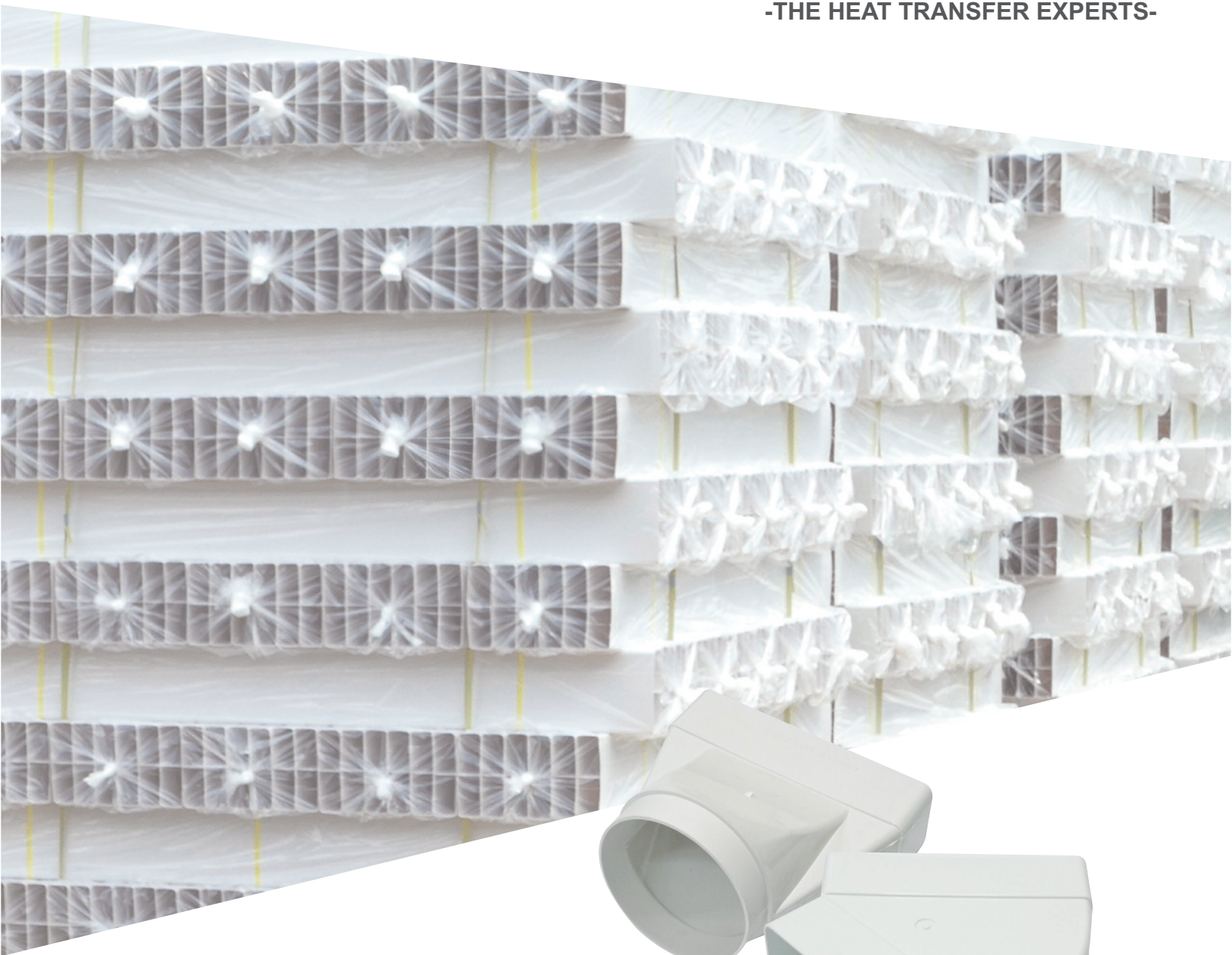


-THE HEAT TRANSFER EXPERTS-



LOW PROFILE DUCT, For AIR DISTRIBUTION

# LOW PROFILE DUCT

P R O D U C T   G U I D E

JUNGSANG Low Profile Duct carries various product sizes and gets the credit for high quality



www.topent.co.kr nhk@topent.co.kr tel.+82-31-925-9501

# LOW PROFILE DUCT

For AIR DISTRIBUTION

## INTRODUCTION

Spacesaver low profile duct has been designed to provide quiet efficient air extraction from bathrooms, kitchens, dryers and area's or appliances that need air extracted.

Spacesaver low profile duct has been designed to be installed in confined ceiling and wall space allowing for more flexible design and give architects more freedom and scope.

Available in three sizes to suit a large of air quantities with low resistance at a low noise level, maximizing fan performance. Made from plastic and engineered to be assembled quickly and easily saving time and money.

Spacesaver low profile duct has been independently tested and comes with fire rated Certificate to suit as/nzs 1530.3 to comply with building standards and has been installed in many high-rise and small apartment developments plus domestic and commercial applications giving our clients great service, satisfaction and peace of mind.

## ADVANTAGES OF SPACESAVER LOW PROFILE DUCT

- Save on joiners / cost saving
- Allows higher ceiling in apartments
- Channel duct comes in 2m length
- Brackets can be fixed by using ramset charges thus can reduce installation time
- Save installation costs
- Fire resistant
- Maximizes fan performance due to less resistance
- Can be easily altered on site to suit
- Smooth surface reduces dirt built up

## PLASTIC LOW PROFILE DUCT

### MEETING THE GREEN BUILDING CHALLENGE

Plastic meets the challenges of today's green building specifications. Green building refers to the growing importance of meeting sustainability requirements in construction materials and practices while at the same time limited the impact on natural resources in both the construction an long-term maintenance and life cycle of a commercial or residential building.



# LOW PROFILE DUCT

For AIR DISTRIBUTION

## Plastic pipe and fittings offer a number of green building qualities :

- Properly installed plastic duct and fittings offer an especially long service life and offer dependable, maintenance free service free from rust and corrosion.
- Because plastic is an inert substance, it does not react with chemicals around it. In fact, it's often the material of choice for chemical processing. Since plastic is so dependable, it protects the surrounding environment from contamination.
- Solvent cements and their use have been carefully studied. As a result guidance for their use is documented in ASTM D 2564 and ASTM 656. Concerns regarding the use of solvent cements are easily addressed by using appropriate ventilation and protection from skin contact.
- Plastics' long life cycle means that the issue of handling discarded plastic materials is somewhat minimized. However, even discarded plastic is recycled. According to the Vinyl Institute, Vinyl may be automatically sorted from other recyclables. And the demand for recycled vinyl exceeds the supply.
- No waste in the manufacturing process. Leftover materials are simply reground for more products. Plastic pipe has been successfully tested against the ANSI/NSF 61 Standard and other health effect standards for more than 35 years. Plastic is a thermoplastic material from compounds that commonly meet Class 12434 per ASTM D.

## GENERAL

- Plastic piping systems are :
  - \* Environmentally sound
  - \* Provide long service life
  - \* Easy to install and handle
  - \* Corrosion resistant
  - \* Cost effective
  - \* Widely accepted by codes
- Plastic duct is manufactured by extrusion in a variety of sizes and dimensions.
- Plastic duct is made to conform to various ASTM standards for both pressure and non-pressure applications.

## USES / APPLICATIONS

- Plastic piping and ducts are used for :
  - \* Ventilation ducting
  - \* Various industrial installations
- Plastic materials are resistant to many ordinary chemicals such as acids, bases, salts and oxidants.



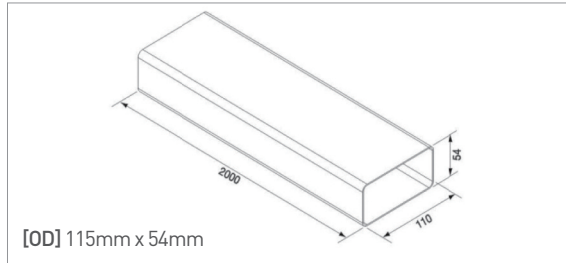
# LOW PROFILE DUCT

For AIR DISTRIBUTION

## 100 SERIES

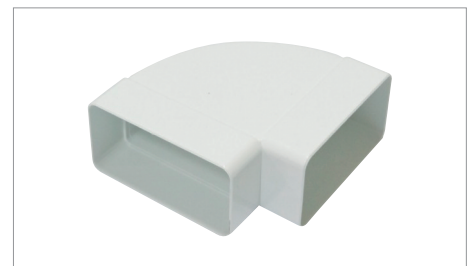
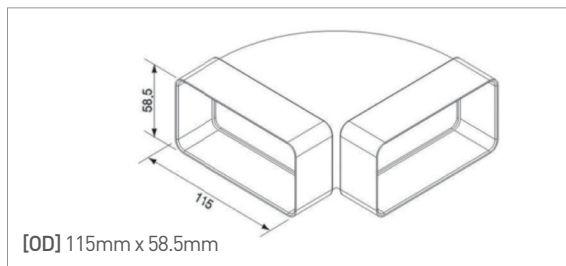
Ref. no 101

CHANNEL DUCT [110mm\*54mm\*2m]  
MATERIAL : PVC, Flame retardant / THICKNESS : 1.5T



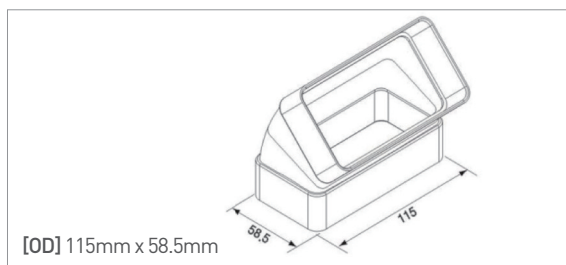
Ref. no 102

DUCT HORIZONTAL 90 DEGREE BEND [For 110mm\*54mm]  
MATERIAL : ABS, Flame retardant / THICKNESS : 1.5T



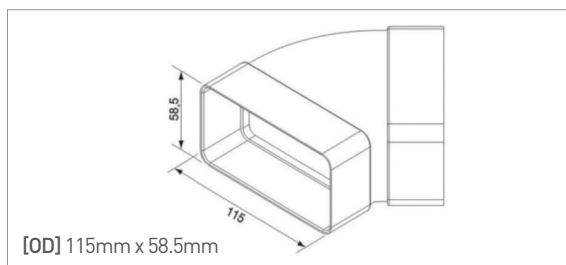
Ref. no 103

DUCT VERTICAL 45 DEGREE BEND [For 110mm\*54mm]  
MATERIAL : ABS, Flame retardant / THICKNESS : 1.5T



Ref. no 104

DUCT HORIZONTAL 45 DEGREE BEND [For 110mm\*54mm]  
MATERIAL : ABS, Flame retardant / THICKNESS : 1.5T



# LOW PROFILE DUCT

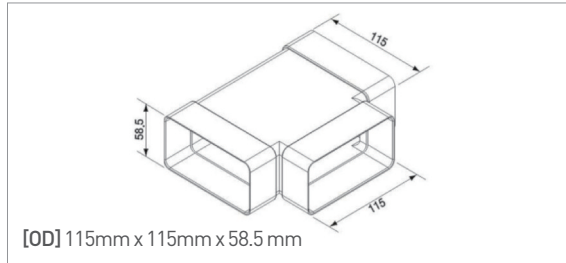
For AIR DISTRIBUTION

## 100 SERIES

Ref. no 105

T - CONNECTOR [110mm\*54mm - 110mm\*54mm - 110mm\*54mm]

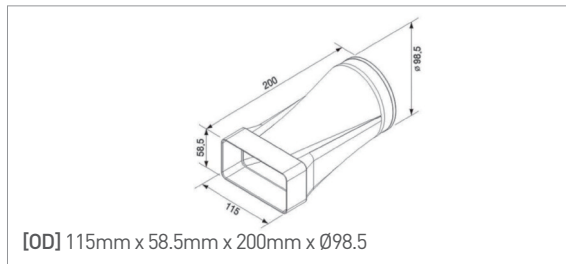
MATERIAL : PVC, Flame retardant / THICKNESS : 1.5T



Ref. no 106

ROUND TO RECTANGULAR ADAPTOR [110mm\*54mm - Ø100]

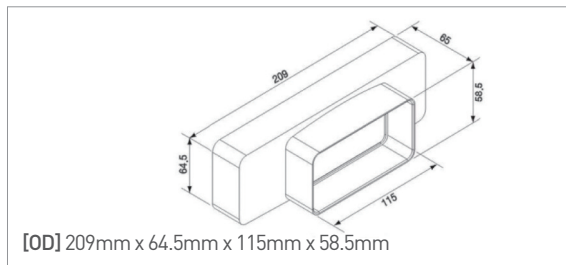
MATERIAL : ABS, Flame retardant / THICKNESS : 1.5T



Ref. no 107

RECTANGULAR TO RECTANGULAR ADAPTOR [204mm\*60mm - 110mm\*54mm]

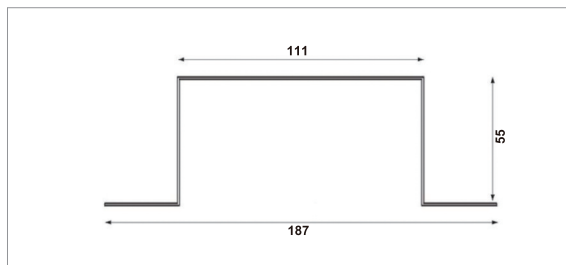
MATERIAL : ABS, Flame retardant / THICKNESS : 1.5T



Ref. no 108

RECTANGULAR DUCT SUPPORT CLIP [For 110mm\*54mm]

MATERIAL : GALVANIZED IRON / THICKNESS : 0.6T ~ 0.8T



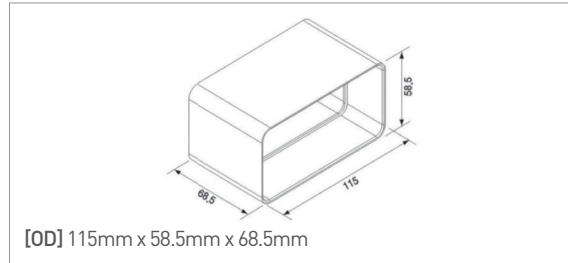
# LOW PROFILE DUCT

For AIR DISTRIBUTION

## 100 SERIES

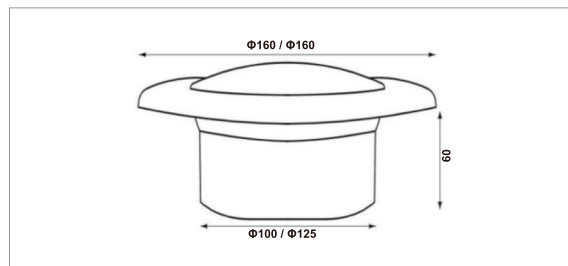
Ref. no 109

DUCT CONNECTOR [For 110mm\*54mm]  
MATERIAL : ABS, Flame retardant / THICKNESS : 1.5T



Ref. no 110

ROUND DIFFUSER [Ø100 / Ø125]  
MATERIAL : ABS, Flame retardant



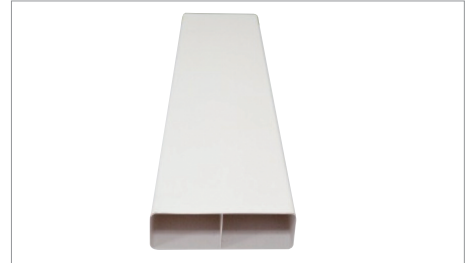
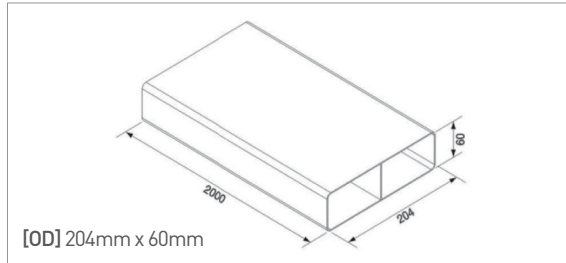
# LOW PROFILE DUCT

For AIR DISTRIBUTION

## 200 SERIES

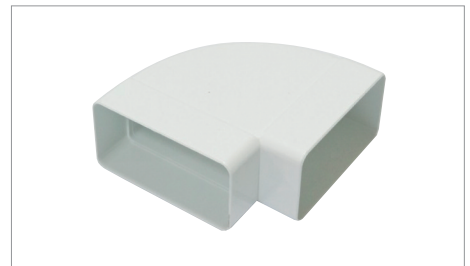
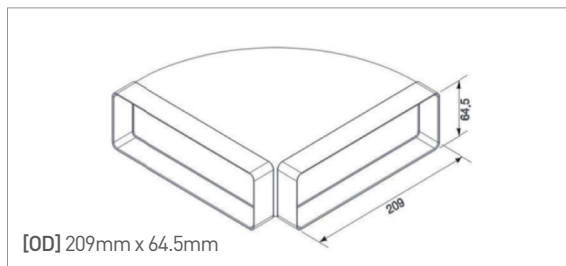
Ref. no 201

CHANNEL DUCT [204mm\*60mm\*2m]  
MATERIAL : PVC, Flame retardant / THICKNESS : 1.5T



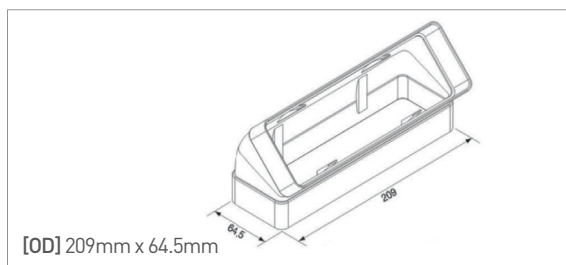
Ref. no 202

DUCT HORIZONTAL 90 DEGREE BEND [For 204mm\*60mm]  
MATERIAL : ABS, Flame retardant / THICKNESS : 2.0T



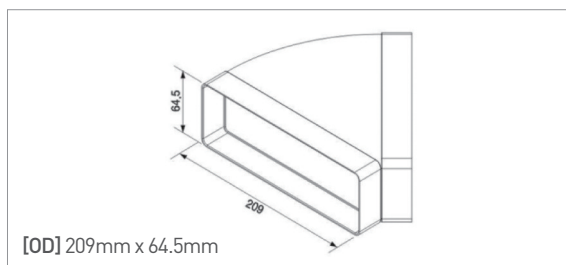
Ref. no 203

DUCT VERTICAL 45 DEGREE BEND [For 204mm\*60mm]  
MATERIAL : ABS, Flame retardant / THICKNESS : 2.0T



Ref. no 204

DUCT HORIZONTAL 45 DEGREE BEND [For 204mm\*60mm]  
MATERIAL : ABS, Flame retardant / THICKNESS : 2.0T



# LOW PROFILE DUCT

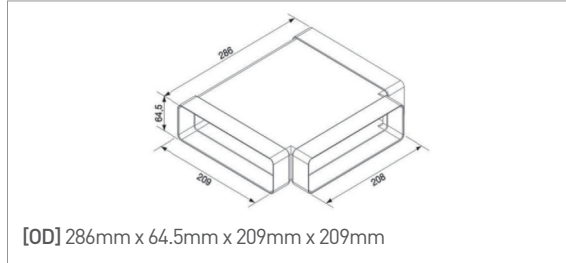
For AIR DISTRIBUTION

## 200 SERIES

Ref. no 205

T-CONNECTOR [204mm\*60mm - 204mm\*60mm - 204mm\*60mm]

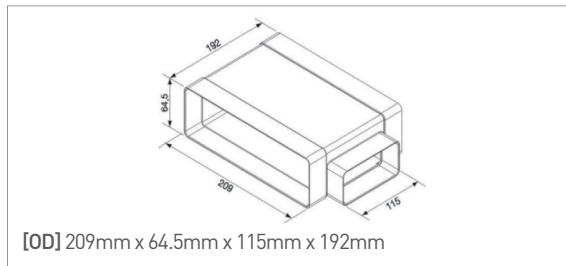
MATERIAL : ABS, Flame retardant / THICKNESS : 2.0T



Ref. no 206

T-CONNECTOR [204mm\*60mm - 204mm\*60mm - 110mm\*54mm]

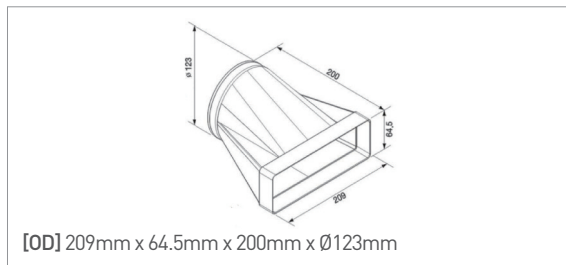
MATERIAL : ABS, Flame retardant / THICKNESS : 2.0T



Ref. no 207

ROUND TO RECTANGULAR ADAPTOR [204mm\*60mm - Ø125]

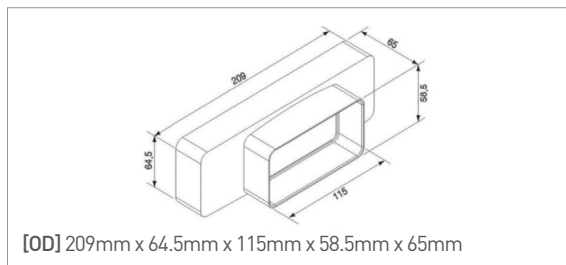
MATERIAL : ABS, Flame retardant / THICKNESS : 2.0T



Ref. no 208

RECTANGULAR TO RECTANGULAR ADAPTOR [204mm\*60mm - 110mm\*54mm]

MATERIAL : ABS, Flame retardant / THICKNESS : 2.0T





# LOW PROFILE DUCT

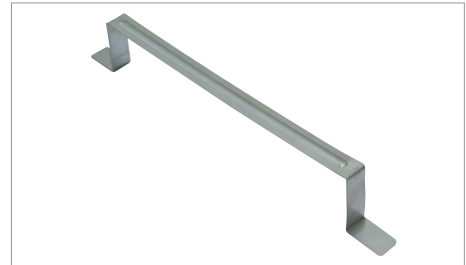
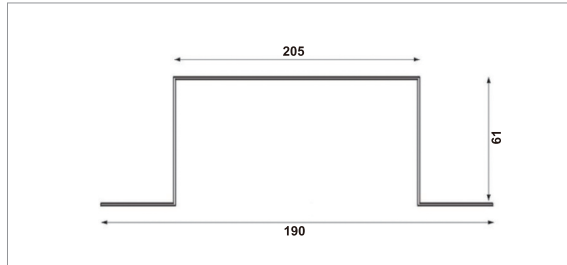
For AIR DISTRIBUTION

## 200 SERIES

Ref. no 209

RECTANGULAR DUCT SUPPORT CLIP [For 204mm\*60mm]

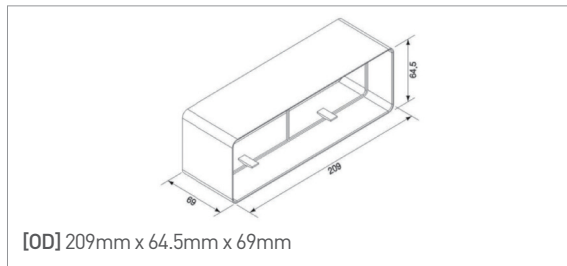
MATERIAL : GALVANIZED IRON / THICKNESS : 0.6T ~ 0.8T



Ref. no 210

DUCT CONNECTOR [For 204mm\*60mm]

MATERIAL : ABS, Flame retardant / THICKNESS : 2.0T



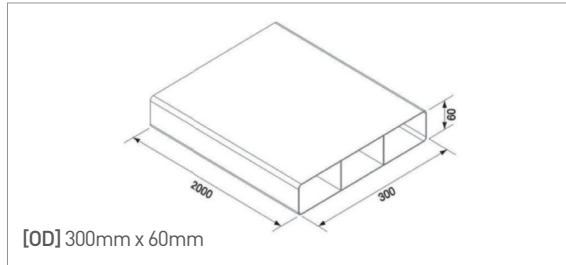
# LOW PROFILE DUCT

For AIR DISTRIBUTION

## 300 SERIES

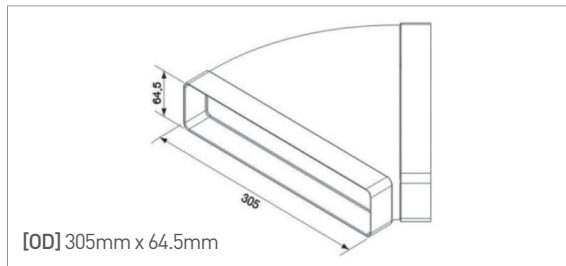
Ref. no 301

CHANNEL DUCT [300mm\*60mm\*2m]  
MATERIAL : PVC, Flame retardant / THICKNESS : 2.0T



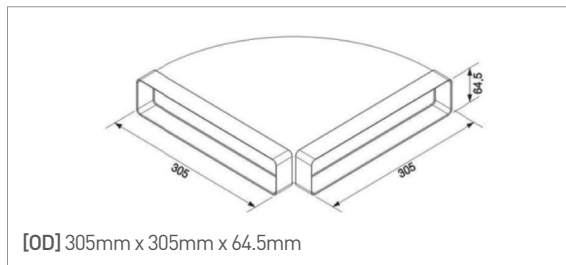
Ref. no 302

DUCT HORIZONTAL 45 DEGREE BEND [For 300mm\*60mm]  
MATERIAL : ABS, Flame retardant / THICKNESS : 2.0T



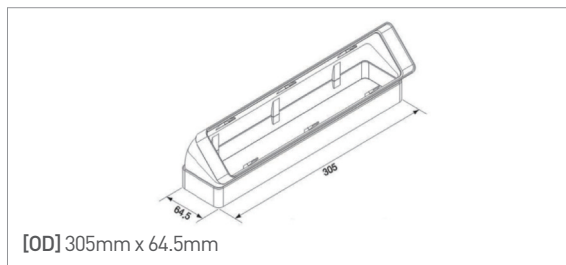
Ref. no 303

DUCT HORIZONTAL 90 DEGREE BEND [For 300mm\*60mm]  
MATERIAL : ABS, Flame retardant / THICKNESS : 2.0T



Ref. no 304

DUCT VERTICAL 45 DEGREE BEND [For 300mm\*60mm]  
MATERIAL : ABS, Flame retardant / THICKNESS : 2.0T



# LOW PROFILE DUCT

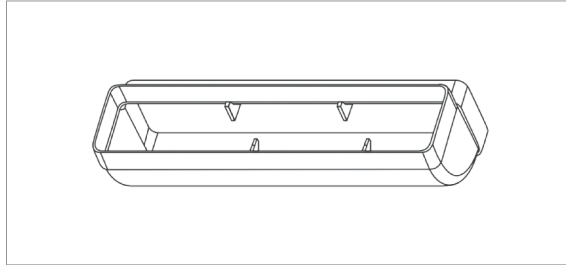
For AIR DISTURIBUTION

## 300 SERIES

Ref. no 305

DUCT VERTICAL 90 DEGREE BEND [For 300mm\*60mm]

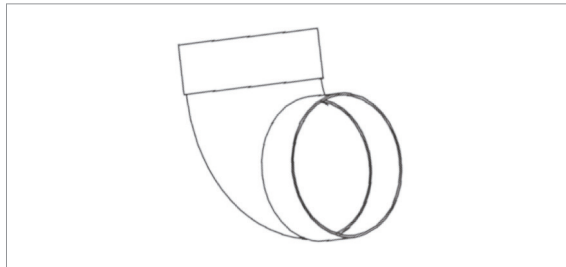
MATERIAL : ABS, Flame retardant / THICKNESS : 2.0T



Ref. no 306

125MM 90 DEGREE ELBOW [Ø125mm - Ø125mm]

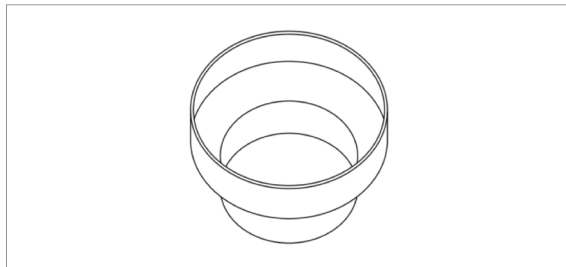
MATERIAL : ABS, Flame retardant / THICKNESS : 2.0T



Ref. no 307

ROUND TO ROUND ADAPTOR [200mm - 150mm]

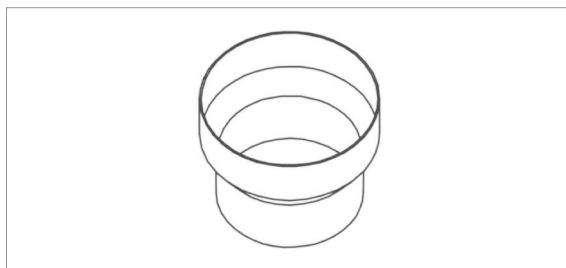
MATERIAL : ABS, Flame retardant / THICKNESS : 2.0T



Ref. no 308

ROUND TO ROUND ADAPTOR [150mm - 125mm]

MATERIAL : ABS, Flame retardant / THICKNESS : 2.0T



# LOW PROFILE DUCT

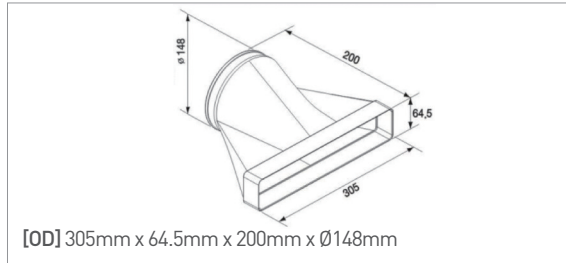
For AIR DISTRIBUTION

## 300 SERIES

Ref. no 309

ROUND TO RECTANGULAR ADAPTOR [300mm\*60mm - Ø150]

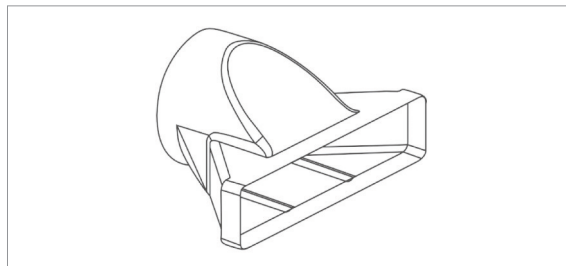
MATERIAL : ABS, Flame retardant / THICKNESS : 2.0T



Ref. no 310

ROUND TO RECTANGULAR ADAPTOR [300mm\*60mm - Ø200]

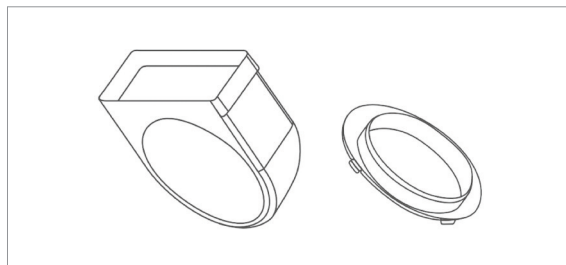
MATERIAL : ABS, Flame retardant / THICKNESS : 2.0T



Ref. no 311

ARRANGEHOOD ADAPTOR [300mm\*60mm - Ø150]

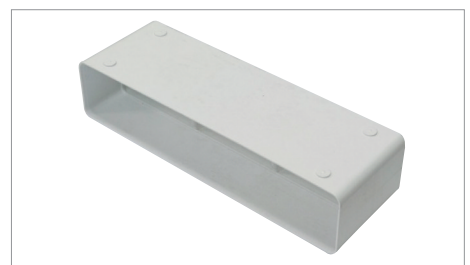
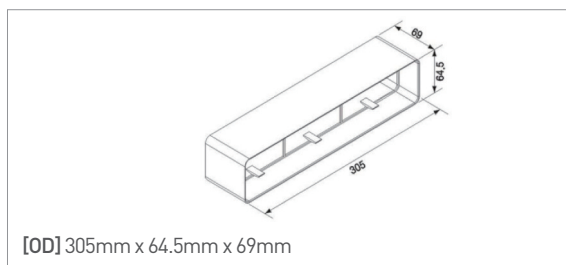
MATERIAL : ABS, Flame retardant / THICKNESS : 2.0T



Ref. no 312

DUCT CONNECTOR [For 300mm\*60mm]

MATERIAL : ABS, Flame retardant / THICKNESS : 2.0T



# LOW PROFILE DUCT

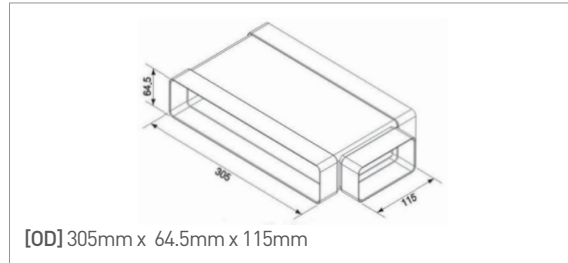
For AIR DISTRIBUTION

## 300 SERIES

Ref. no 313

T-CONNECTOR [300mm\*60mm - 300mm\*60mm - 110mm\*54mm]

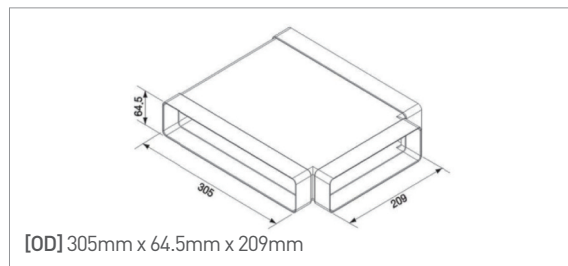
MATERIAL : ABS, Flame retardant / THICKNESS : 2.0T



Ref. no 314

T-CONNECTOR [300mm\*60mm - 300mm\*60mm - 204mm\*60mm]

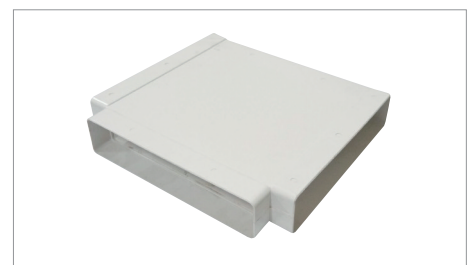
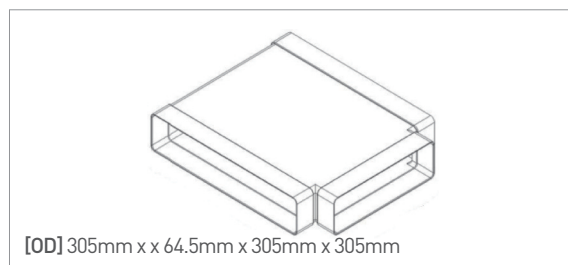
MATERIAL : ABS, Flame retardant / THICKNESS : 2.0T



Ref. no 315

T-CONNECTOR [300mm\*60mm - 300mm\*60mm - 300mm\*60mm]

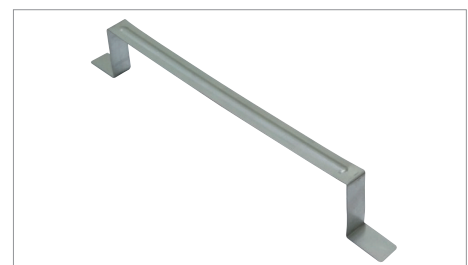
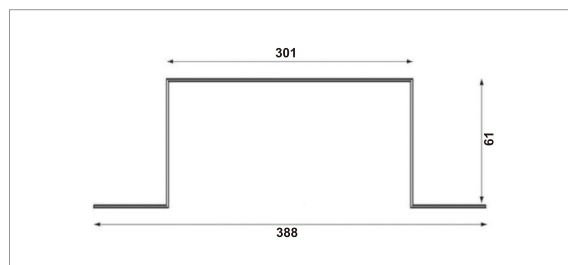
MATERIAL : ABS, Flame retardant / THICKNESS : 2.0T



Ref. no 316

RECTANGULAR DUCT SUPPORT CLIP [For 300mm\*60mm]

MATERIAL : GALVANIZED IRON / THICKNESS : 0.6T ~ 0.8T



# LOW PROFILE DUCT

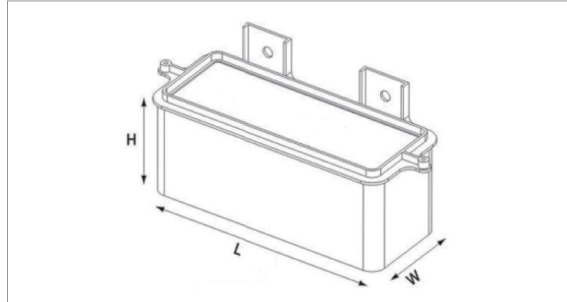
For AIR DISTRIBUTION

## SLEEVE SERIES

Ref. no 317C

RECTANGULAR SLEEVE

MATERIAL : PVC



CHANNEL DUCT SERIES	L	W	H
110mm*54mm	132mm	77mm	130mm ~ 210mm
204mm*60mm	246mm	91mm	130mm ~ 210mm
300mm*60mm	337mm	93mm	130mm ~ 210mm

Ref. no 318C

ROUND SLEEVE

MATERIAL : PVC



DIAMETER	INNER DIAMETER	OUTER DIAMETER	LENGTH
Ø100	Ø118	Ø124	120mm, 150mm 180mm, 200mm
Ø125	Ø143	Ø149	120mm, 150mm 180mm, 200mm
Ø150	Ø171	Ø177	120mm, 150mm 180mm, 200mm
Ø200	Ø223	Ø229	120mm, 150mm 180mm, 200mm